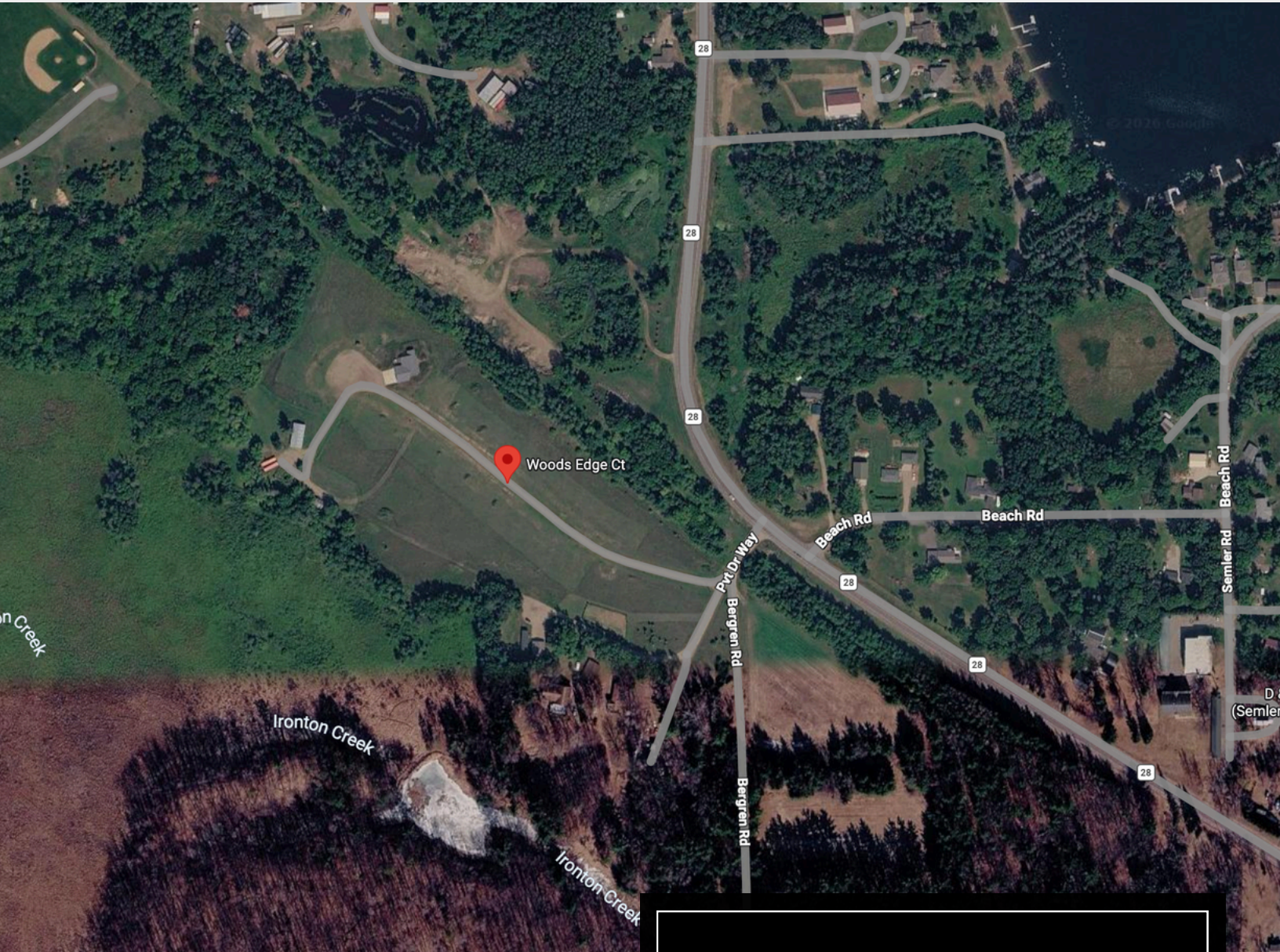


WELCOME HOME



Woods Edge
HWY 28
IRONTON, MN

Population

558

Zip Code

56455

HOA Dues

\$TBD

Schools

Crosby/Ironton Schools

WOODS EDGE:

A community where convenience meets the outdoors—just minutes from Serpent Lake, downtown Crosby, and the hospital. Enjoy privacy with easy access to trails, parks, schools, and year-round recreation—the perfect place to build your home and create lasting memories.

HISTORY:

Woods Edge is recently developed. This inviting new development offers privacy without sacrificing location. A community where convenience meets the outdoors!

ATTRACTIONS:

- Local Shopping
- Restaurants
- Bars/Breweries
- Family-Friendly
- Biking Trails
- Parks
- Year-Round Recreation

WHY PEOPLE LOVE IT:

- Friendly Community
- Historic Charm
- Close to Downtown
- Peaceful Atmosphere
- Nature Lovers Dream



LIVING LOCAL

LOCAL CROSBY/IRONTON FAVORITES

COFFEE & CAFES

- Mixed Company - A Kava House:** Delicious food & coffee.
- North Country Cafe:** Clean, lively atmosphere.
- Red Raven:** Great vibes, delicious lattes.
- High Wheel Confectionery & Coffee:** Local candy & coffee.

RESTAURANTS:

- Iron Range Eatery:** Tasty, unique, varied menu.
- Hudson Smokehouse:** Amazing outside space.
- Drunken Noodle:** Delicious food.
- Raffertys:** Great pizza and atmosphere.

BARS & BREWERIES:

- Cuyuna Brewing Co:** Local brews, outdoor space.
- Trailside Tavern:** Great atmosphere and patio.
- Bridge Tavern:** Gluten free options.
- Croft Kitchen & Bar:** Well-thought-out meals.

GROCERY & MARKETS:

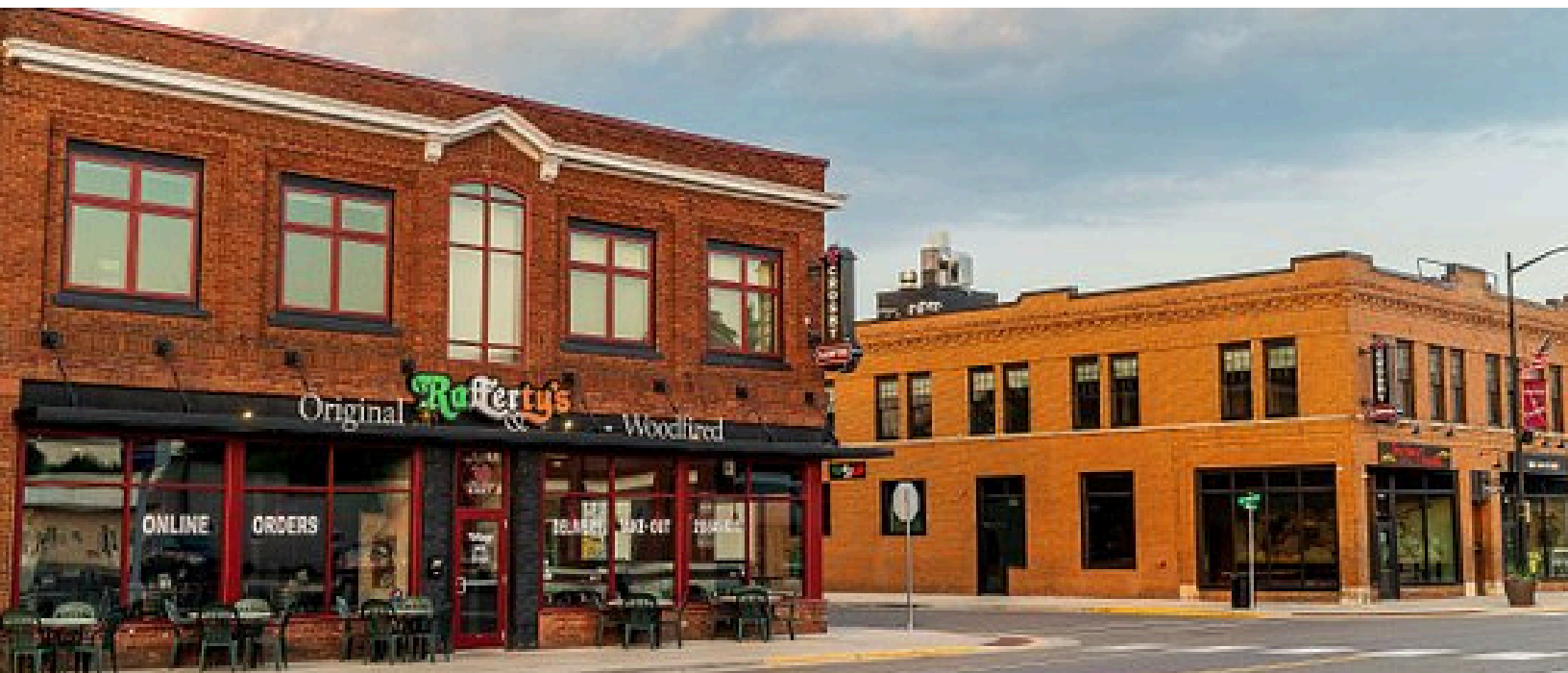
- Super One Foods:** Warehouse-like supermarket with a deli.
- Cuyuna Range Farmers Market:** Fresh produce and local products.

OUTDOOR ACTIVITIES

- Cuyuna Rec Area:** 70+ miles of mountain biking trails.
- Crystal Clear Mine Lakes:** Former mining pits transformed into stunning turquoise lakes.
- Four-Season Recreation:** Year-round fishing, winter snowmobiling, and trail biking.

FAMILY ACTIVITIES

- Crosby Memorial Park & Beach:** Local favorite.
- Downtown Crosby:** Ice cream, shops - small-town feel.
- Cuyuna Lakes State Trail:** Smooth, paved trails.
- Nature Exploration:** Dozens of lakes - kids fishing, wildlife spotting, and outdoor exploration.





EDUCATION

For relocating families or second-home buyers, Crosby/Ironton schools provide a rare combination of strong academics, personal attention, and community connection—making the area especially attractive for raising kids while enjoying the outdoor lifestyle the region is known for.

WHY FAMILIES CHOOSE CROSBY- IRONTON SCHOOLS

- Crosby-Ironton schools offer a high-quality, small-town education experience that's hard to find in larger districts. With a low student-to-teacher ratio (about 14:1), students benefit from more individualized attention and stronger relationships with teachers.
- The district consistently ranks in the top tier of Minnesota schools (top ~20–30%), with strong performance in reading, science, and overall academic achievement.
- Graduates are supported by a focus on college and career readiness, along with access to technology and extracurricular opportunities.
- Beyond academics, Crosby-Ironton emphasizes a safe, supportive environment and “learning through relationships”, creating a close-knit school culture where students are known, supported, and encouraged to succeed.

ELEMENTARY:

- Cuyuna Range Elementary School (PK - 6)

SECONDARY:

- Crosby-Ironton Secondary School (7 - 12)

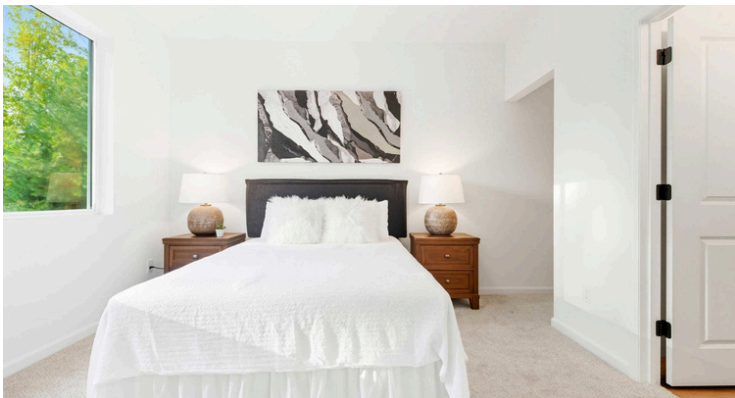
Crosby-Ironton operates a streamlined, community-focused district with just two schools, serving students from early childhood through graduation.



20957 WOODS EDGE CT IRONTON, MN



Photos from a similar home, not exact property



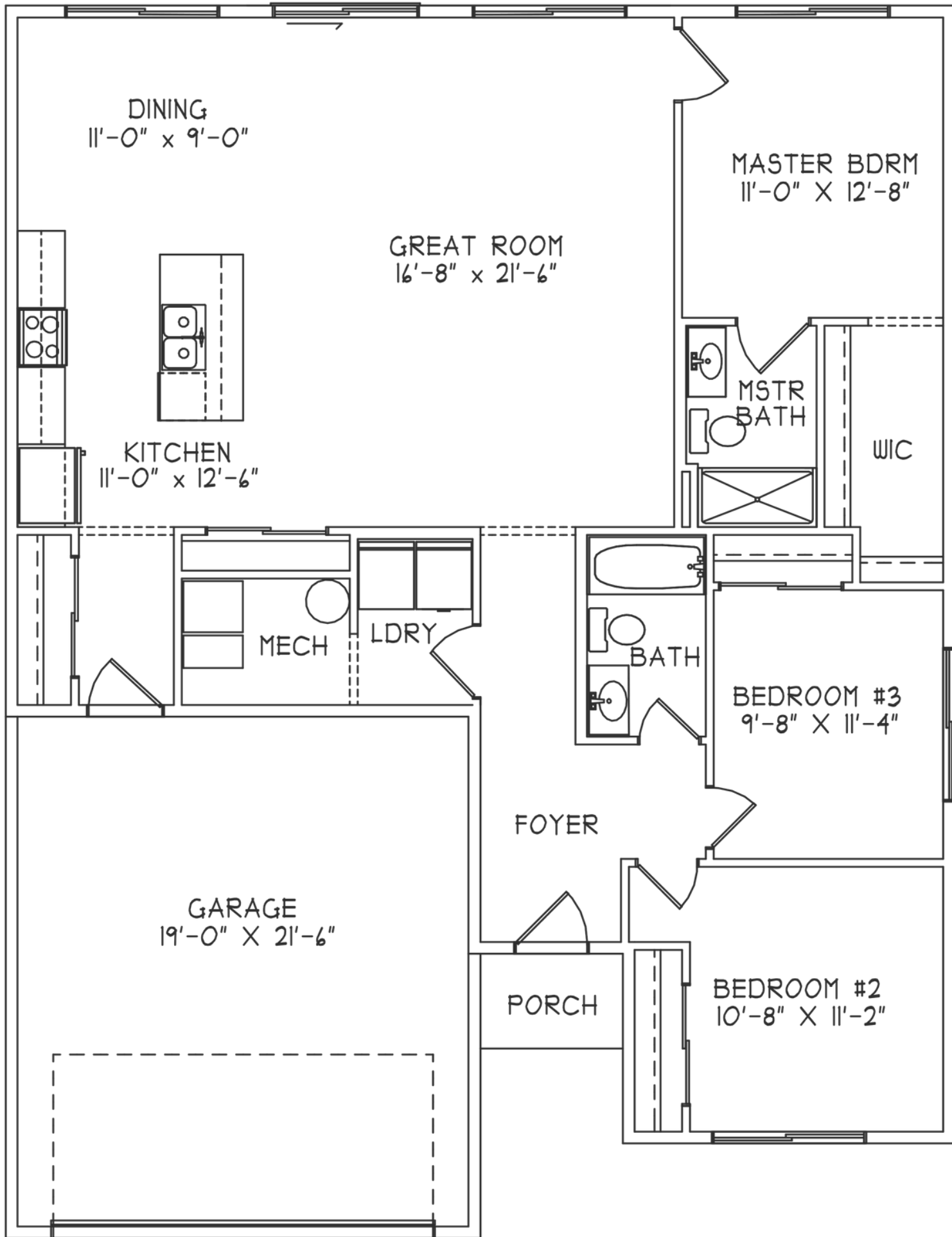
FEATURES

- 3 BEDROOMS
- 2 BATHS
- 1,517 SQFT
- SLAB ON GRADE
- OPEN FLOOR PLAN
- 2 CAR GARAGE

DESCRIPTION:

This spacious single-story house features three bedrooms, two bathrooms, elegant granite countertops throughout, and stainless steel appliances in the kitchen. The master bedroom offers a private bathroom for added comfort.

COMING SPRING 2026



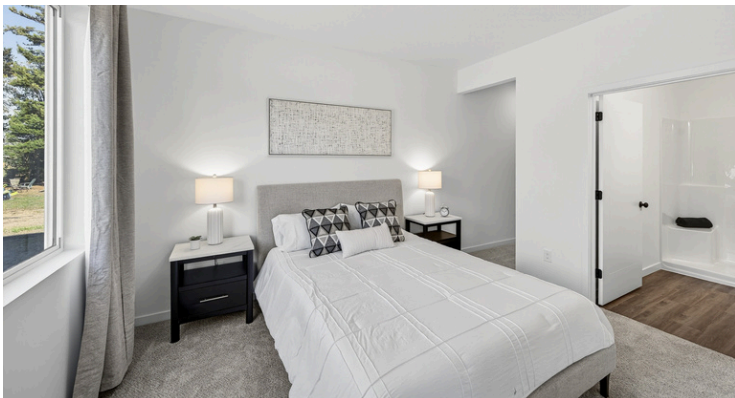
FLOOR PLAN



20929 WOODS EDGE CT IRONTON, MN



Photos from a similar home, not exact property



FEATURES

- 3 BEDROOMS
- 2 BATHS
- 1,517 SQFT
- SLAB ON GRADE
- OPEN FLOOR PLAN
- 2 CAR GARAGE

DESCRIPTION:

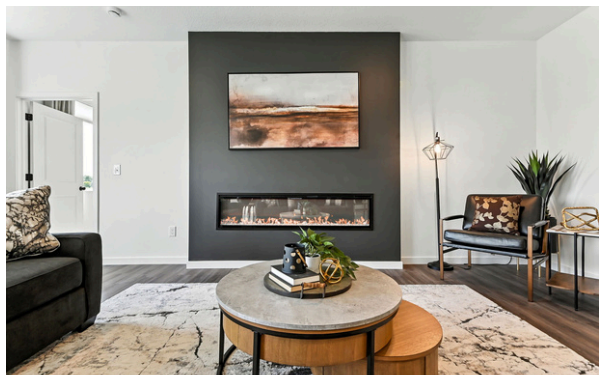
This spacious single-story house features three bedrooms, two bathrooms, elegant granite countertops throughout, and stainless steel appliances in the kitchen. The master bedroom offers a private bathroom for added comfort.

COMING SUMMER 2026

WOODS EDGE







UTILITY PROVIDERS

ELECTRIC


MINNESOTA POWER

WWW.MNPOWER.COM

1-800-228-4966

GAS


MN ENERGY RESOURCES

WWW.MINNESOTAENERGYRESOURCES.COM

1-800-889-9508

SATELLITE


DIRECT TV

WWW.DIRECTV.COM

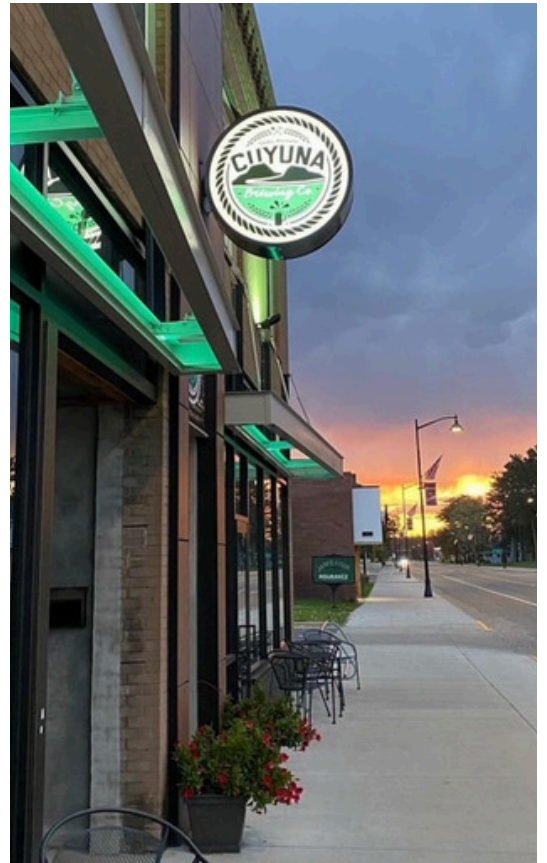
1-877-688-3794

INTERNET


CTC

WWW.GOCTC.COM

1-800-753-9104



THANK YOU

A NOTE FOR OUR GUESTS:

Thank you for taking the time to tour this home in Woods Edge by Price Homes. We hope you've enjoyed experiencing the craftsmanship, design, and lifestyle this community has to offer.

This binder was thoughtfully put together to provide helpful information about the Woods Edge development and the surrounding area, giving you a better sense of what it's like to live here. We hope it's been a valuable resource as you consider your next move.

We understand that building or buying a home is a significant decision, and our team is here to guide you every step of the way. If you have any questions or would like to explore options, please don't hesitate to reach out. We'd be honored to welcome you home to Woods Edge.



(763) 276-7197 | SALES@PRICEHOMES.COM | PRICEHOMES.COM

A Minnesota Builder You Can Trust



For more than 15 years, Price Homes has been building award-winning homes across Minnesota. As a local builder, we take pride in creating homes that reflect thoughtful design, lasting quality, and the lifestyles of the families who live in them.

Craftsmanship That Sets Us Apart

What truly sets us apart from national builders is our commitment to the way we guide our buyers through the building process. From the first conversation to the final walkthrough, our team believes an informed buyer is a confident buyer—so we focus on education, transparency, and making the experience as smooth as possible.



Homes Designed for Every Chapter

Whether you're repurchasing your first home, moving into something with more space, or building the custom home you've always imagined, we offer designs and opportunities to meet you wherever you are in life.

Build Where You Want to Live

Some buyers fall in love with one of our communities, while others already have the perfect piece of land. With Price Homes, you can build on one of our home sites or on land you already own, giving you the flexibility to create the right home in the right location.

Family Owned. Community Focused.

As a family-owned builder, our roots run deep in the communities we serve. Many of our trade partners and subcontractors have worked with us for years, creating trusted relationships that help ensure every home is built with care, consistency, and attention to detail.

Local Roots. Lasting Homes.